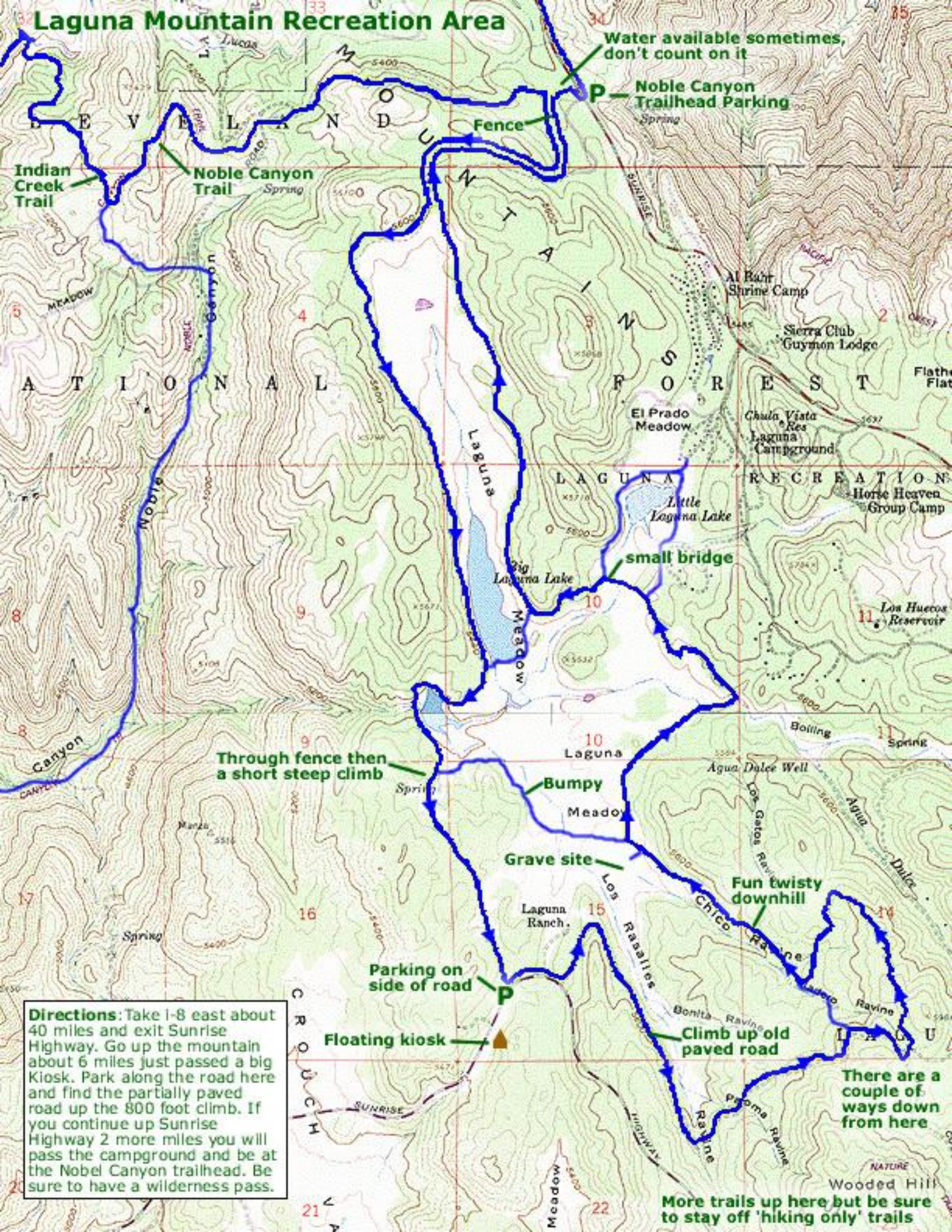


Laguna Mountain Recreation Area



Water available sometimes, don't count on it

P Noble Canyon Trailhead Parking

Indian Creek Trail

Noble Canyon Trail

Fence

A T I O N A L

Sierra Club Guymon Lodge

El Prado Meadow

Chula Vista Res Laguna Campground

LAGUNA

Little Laguna Lake

Big Laguna Lake

MEADOW

10

10 Laguna

10

Through fence then a short steep climb

Bumpy Meadow

Grave site

Laguna Ranch

Parking on side of road

Floating kiosk

Fun twisty downhill

Chice Ravine

15

Climb up old paved road

There are a couple of ways down from here

Directions: Take I-8 east about 40 miles and exit Sunrise Highway. Go up the mountain about 6 miles just passed a big Kiosk. Park along the road here and find the partially paved road up the 800 foot climb. If you continue up Sunrise Highway 2 more miles you will pass the campground and be at the Nobel Canyon trailhead. Be sure to have a wilderness pass.

More trails up here but be sure to stay off 'hiking only' trails

Wooded Hill