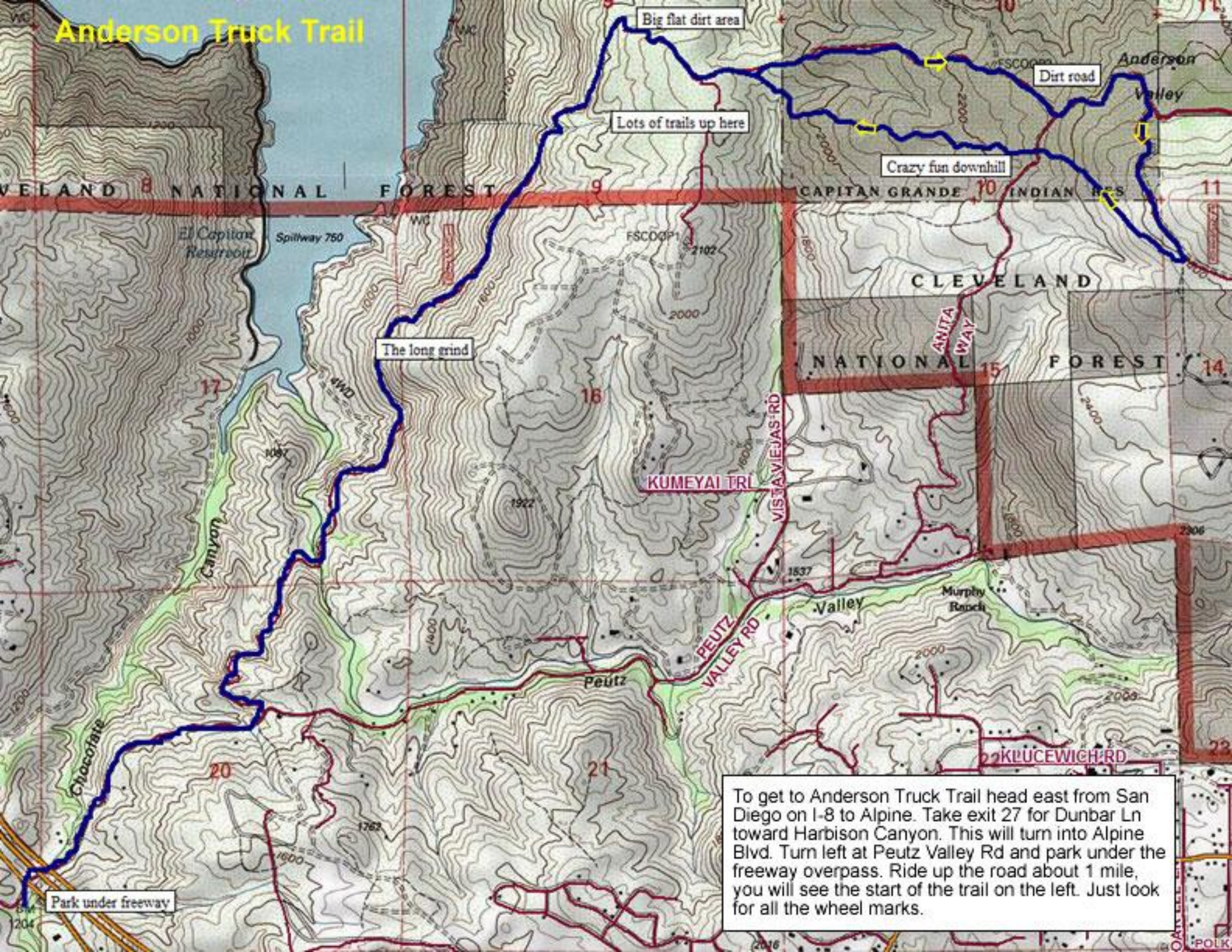


# Anderson Truck Trail



Big flat dirt area

Dirt road

Lots of trails up here

Crazy fun downhill

The long grind

KUMEYAI TRI

ANITA WAY

PEUTZ VALLEY RD

VISTAVIEJAS RD

KLÜCEWICH RD

Park under freeway

To get to Anderson Truck Trail head east from San Diego on I-8 to Alpine. Take exit 27 for Dunbar Ln toward Harbison Canyon. This will turn into Alpine Blvd. Turn left at Peutz Valley Rd and park under the freeway overpass. Ride up the road about 1 mile, you will see the start of the trail on the left. Just look for all the wheel marks.